



Rabbit anti LSP (Paired S190) Polyclonal Antibody

Alternative Name(s): Lymphocyte-specific protein 1

Order Information

- **Description:** LSP (Paired S190)
- **Catalogue:** 602-260
- **Lot:** See label
- **Size:** 100ug/200ul
- **Host:** Rabbit
- **Clone:** nan
- **Application:** IHC(P), WB
- **Reactivity:** Hu, Ms, Rt

ANTIGEN PREPARATION

A synthetic peptide corresponding to the C-terminus with NON- phosphorylated serine (-QASIEL-) of human lymphocytespecific protein 1. This sequence is identical to mouse species

BACKGROUND

Leukocyte-specific protein 1 (LSP1), an F-actin binding protein and a major downstream substrate of p38 mitogen-activated protein kinase as well as protein kinase C, is important in leukocyte chemotaxis. Two serine residues at positions 204 and 252 are potential phosphorylation sites. The amino acid sequences surrounding these two sites are in agreement with the consensus sequence (Xaa-Xaa-Hyd-Xaa-Arg-Xaa-Xaa-Ser-Xaa-Xaa) for phosphorylation by MAPKAP kinase 2. Both serine residues in human LSP1 and the corresponding conserved serine residues in human and mouse LSP1 are in the basic C-terminal F-actin binding domain. LSP1 is a substrate for MAPKAP kinase 2 in vitro and that the phosphorylation sites are located in the basic C-terminal domain of LSP1.

PURIFICATION

The Rabbit IgG is purified by Epitope Affinity Purification

FORMULATION

This affinity purified antibody is supplied in sterile Phosphatebuffered saline (pH7.2) containing antibody stabilizer

SPECIFICITY

This antibody recognizes ~52 kDa of human LSP1 protein Without a phosphorylated S252. This antibody also reacts with mouse and rat The other species are not tested.

STORAGE

The antibodies are stable for 24 months from date of receipt when stored at -20oC to -70oC. The antibodies can be stored at 2oC-8oC for three month without detectable loss of activity. Avoid repeated freezing-thawing cycles.

APPLICATIONS/SUGGESTED WORKING DILUTIONS*

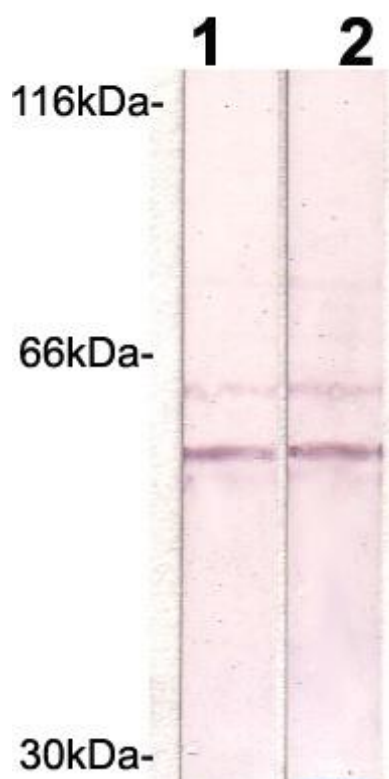
- Western Blot: 0.1-1 µg/ml
- ELISA: 0.01-0.1 µg/ml
- Immunoprecipitation: 2-5 µg/ml
- IHC: 2-10 µg/ml
- Flow cytometry: Not tested
- Molecular Weight: 55.0
- Positive Control: Kidney Tissue
- Cellular Location: Cell Membrane

*Optimal dilutions should be determined by researchers for the specific applications.

FOR RESEARCH USE ONLY.

AbboMax, Inc 2528 Qume Drive, Suite 8, San Jose, California 95131, USA
1 408-573-1898 (Tel). 1 408-573-1858 (Fax). www.abbomax.com info@abbomax.com

DATA ATTACHMENTS



Western Blot: The whole lysate derived from Jurkat (20 ug/lane) immunoblotted by Rabbit anti -LSP1 (paired S190) (Cat#602-260) at 1:500. Observed a major immunoreactive band at molecular weight ~52kDa.

REFERENCES

FOR RESEARCH USE ONLY.

AbboMax, Inc 2528 Qume Drive, Suite 8, San Jose, California 95131, USA
1 408-573-1898 (Tel). 1 408-573-1858 (Fax). www.abbomax.com info@abbomax.com